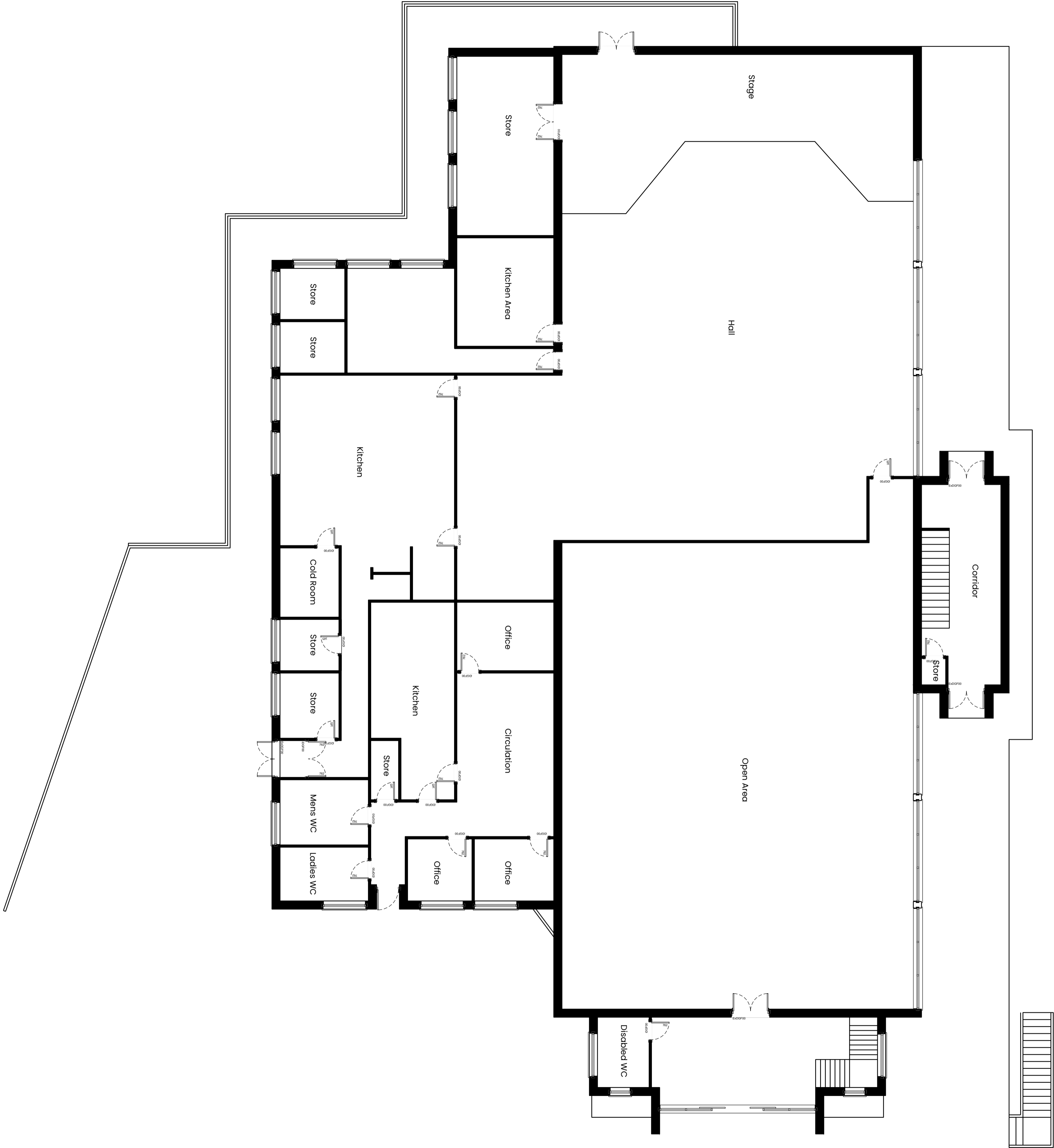
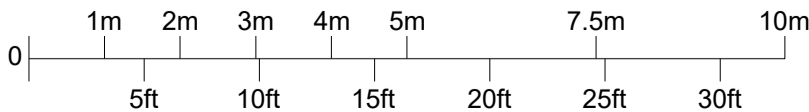


Note: Windows on lower ground floor inaccessible and so are therefore omitted from the drawings.

Lower Ground Floor Plan



Ground Floor Plan



This line should measure 70mm when printed correctly

This drawing is the copyright of Roberts Limbrick Ltd and should not be reproduced in whole or in part or used in any manner whatsoever without their written permission.

Permission is granted to scale from this drawing for the purposes of Local Planning Authority approval only. For all other purposes do not scale from this drawing

Responsibility is not accepted for errors made by others in scaling from this drawing. Use only figured dimensions and report any discrepancies or omissions to the Architect immediately.

Rev	Date	By	Chk	Description
C01	29.01.2024	JH	RHC	First Issue



Roberts Limbrick

03333 405 500
mail@robertslimbrick.com
robertslimbrick.com

Registered Office England No. 09656029

Project Name

RESIDENTIAL DEVELOPMENT
LAND NORTH of ROUNDS
GARDENS, RUGBY

Client Name

ST. MODWEN HOMES
-
-

Drawing Title

EXISTING PAVILION
FLOOR PLANS
-

Scale

1/100 • A1

Project No.

10689

Status

A3

Purpose Of Issue

Issued for Planning

Project	Org	Vol	Level	Form	Role
R9112	RLA	23	XX	DR	A

Number

3030

Revision

C01