

Plant Schedule

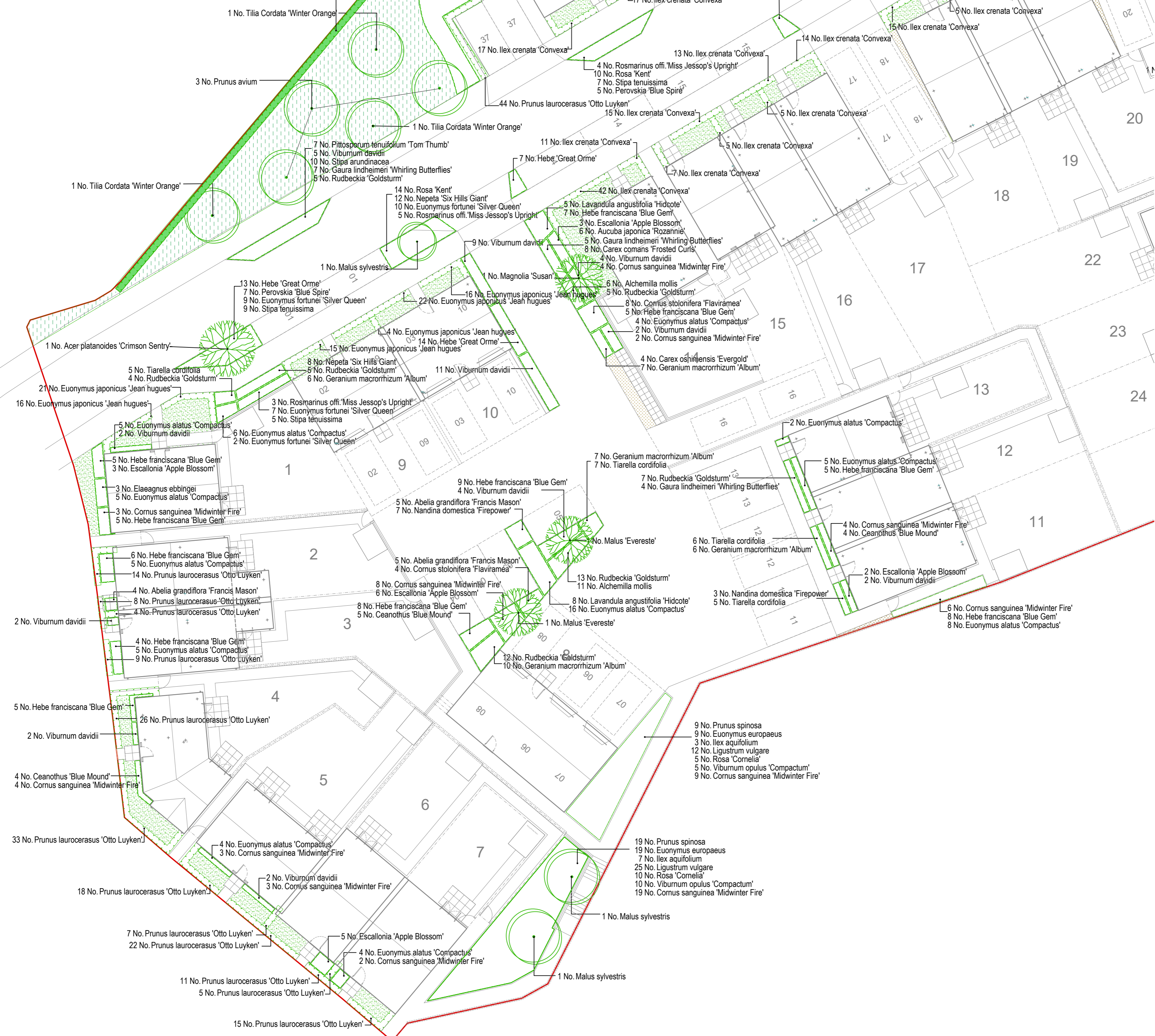
Number	Species	Height	Pot Size	Specification
1	Acer freemanii 'Jefferson'	450-625cm	18-20cm	100-200L Extra Heavy Standard; Clear Stem 200cm
2	Acer platanoides 'Crimson Sentry'	450-625cm	18-20cm	100-200L Extra Heavy Standard; clear stem 200cm
3	Ameletanther grandiflora 'Robin Hill'	400-450cm	18-20cm	45-85L Extra Heavy Standard; clear stem minimum 200cm; 5 breaks
4	Liquidambar styraciflua	450-625cm	18-20cm	100-200L Extra Heavy Standard; Clear Stem 200cm
5	Magnolia 'Susan'	350-400cm	14-16cm	45-85L Extra Heavy Standard; Clear Stem 150-175; 5 brks
6	Malus 'Evereste'	450-500cm	18-20cm	100-200L Extra Heavy Standard; 5 brks; Clear Stem min. 200
7	Malus 'Rudolph'	min. 450cm	18-20cm	100-200L Extra Heavy Standard; Clear Stem 200cm
8	Malus sylvestris	min. 450cm	18-20cm	100-200L Extra Heavy Standard; clear stem minimum 200cm
9	Prunus avium	450-500cm	18-20cm	100-200L Extra Heavy Standard; clear stem minimum 200cm
10	Prunus avium 'Plena'	450-625cm	18-20cm	100-200L Extra Heavy Standard; Clear Stem min. 200
11	Sorbus 'Golden Wonder'	400-450cm	18-20cm	45-85L Extra Heavy Standard; Clear Stem min. 200
12	Sorbus aucuparia 'Rosica Major'	400-450cm	18-20cm	45-85L Extra Heavy Standard; clear stem 175-200cm; 5 breaks
13	Tilia cordata 'Winter Orange'	450-500cm	18-20cm	100-200L Extra Heavy Standard; clear stem minimum 200cm

Number	Species	Height	Pot Size	Specification	Density
64	Abelia grandiflora 'Francis Mason'	30-40cm	5L	Bushy; 4 brks	3/m ²
179	Aucuba japonica 'Rozanne'	30-40cm	5L	Bushy; 4 brks	3/m ²
46	Brachyglottis 'Sunshine'	40-60cm	5L	Branched; 6 brks	3/m ²
110	Buddleia davidii 'Nanho Blue'	30-40cm	5L	Branched; 5 brks	3/m ²
52	Ceanothus 'Blue Mound'	40-60cm	5L	Bushy; 6 brks	3/m ²
30	Cistus corbariensis	40-60cm	5L	Bushy; 6 brks	2/m ²
4	Cornus 'Eden's White Wonder'	60-80cm	25L	Branched; 5 brks	Counted
318	Cornus sanguinea 'Midwinter Fire'	40-60cm	5L	Branched; 4 brks	3/m ²
250	Cornus stolonifera 'Flaviramea'	60-80cm	5L	Branched; 5 brks	3/m ²
3	Cotinus coggygria 'Royal Purple'	80-100cm	25L	Branched; 5 brks	Counted
66	Daphne odora 'Aureomarginata'	40-60cm	5L	Branched; 5 brks	3/m ²
31	Elaeagnus ebbingei	60-80cm	5L	Branched; 4 brks	2/m ²
108	Escallonia 'Apple Blossom'	40-60cm	5L	Bushy; 5 brks	2/m ²
255	Euonymus alatus 'Compactus'	30-40cm	5L	Branched; 3 breaks	4/m ²
28	Euonymus europaeus	40-60cm	5L	1+1; Transplant - seed raised; branched; 3 breaks	2/m ²
404	Euonymus fortunei 'Silver Queen'	20-30cm	5L	Bushy; 5 breaks	4/m ²
81	Hebe 'Great Orme'	30-40cm	5L	Bushy; 7 brks	3/m ²
204	Hebe franciscana 'Blue Gem'	30-40cm	5L	Bushy; 7 brks	3/m ²
5	Hydrangea arborescens 'Annabelle'	60-80cm	25L	Branched; 7 brks	Counted
6	Hydrangea macrophylla	60-80cm	25L	Branched; 7 brks	Counted
25	Hypericum moserianum 'Tricolor'	30-40cm	5L	Bushy; 7 brks	3/m ²
10	Ilex aquifolium	40-60cm	5L	Leader with laterals	2/m ²
225	Lavandula angustifolia 'Hidcote'	30-30cm	5L	Bushy; 7 brks	3/m ²
47	Ligustrum vulgare	40-60cm	5L	0/1; Cutting; branched; 2 breaks	2/m ²
43	Lonicera nitida	40-60cm	5L	Bushy; 5 brks	2/m ²
50	Nandina domestica 'Firepower'	40-60cm	5L	Bushy; 9 brks	2/m ²
43	Oenanthe burkeana	40-60cm	5L	Bushy; 5 brks	2/m ²
93	Perovskia 'Blue Spire'	30-40cm	5L	Bushy; 3 breaks	3/m ²
104	Pittosporum tenuifolium 'Tom Thumb'	40-60cm	5L	Bushy; 5 brks	3/m ²
31	Prunus laurocerasus 'Chaucas'	60-80cm	5L	Bushy; 4 brks	2/m ²
28	Prunus spinosa	40-60cm	5L	1+1; Transplant - seed raised; branched; 2 breaks	2/m ²
34	Pyracantha 'Orange Glow'	60-80cm	5L	Leader with laterals; 3 brks	2/m ²
15	Pyracantha 'Red Column'	60-80cm	5L	Leader with laterals; 5 brks	2/m ²
82	Rosa 'Kent'	30-40cm	5L	Bushy; 4 brks	3/m ²
58	Rosmarinus off. 'Miss Jessop's Upright'	30-40cm	5L	Bushy; 5 brks	3/m ²
13	Santolina chamaecyparissus	30-40cm	5L	Bushy; 8 brks	3/m ²
180	Sarcococca hookerana digy. 'Purple Stem'	30-40cm	5L	Bushy; 6 brks	3/m ²
260	Viburnum davidii	30-40cm	5L	Bushy; 4 brks	2/m ²
27	Viburnum opulus 'Compactum'	30-40cm	5L	Bushy; 4 brks	3/m ²

Number	Species	Height	Pot Size	Specification	Density
79	Corylus avellana	60-80cm	5L	1+2; Transplant - seed raised; branched; 3 breaks	5/m ²
105	Crataegus monogyna	60-80cm	5L	1+1; Transplant - seed raised;	5/m ²
53	Euonymus europaeus	60-80cm	5L	1+2; Transplant - seed raised; branched; 5 breaks	5/m ²
298	Euonymus japonicus 'Jean hugues'	60-80cm	10L	Bushy; 7 breaks	3/m ²
66	Griselinia littoralis	60-80cm	10L	Bushy; 7 brks	Counted
669	Hebe 'Sutherlandii'	40-60cm	10L	Bushy; 9 brks	3/m ²
27	Ilex aquifolium	60-80cm	10L	Leader with laterals	5/m ²
824	Ilex crenata 'Convexa'	30-40cm	10L	Branched; 9 brks	3/m ²
53	Ligustrum vulgare	60-80cm	10L	0/2; Cutting; branched; 3 breaks	5/m ²
595	Olearia haastii	40-60cm	10L	Bushy; 9 brks	3/m ²
423	Prunus laurocerasus 'Otto Luyken'	40-60cm	10L	Bushy; 6 brks	5/m ²
106	Prunus spinosa	60-80cm	5L	1+1; Transplant - seed raised; branched; 2 breaks	5/m ²
27	Sambucus nigra	60-80cm	5L	1+1; Transplant - seed raised; branched; 3 breaks	5/m ²
27	Viburnum tinus	60-80cm	5L	1+1; Transplant - seed raised; branched; 3 breaks	5/m ²

Number	Species	Pot Size	Specification	Density
155	Alchemilla mollis	3L	Full Pot	5/m ²
72	Anemone hybrida 'Honorine Jobert'	3L	Full Pot	5/m ²
35	Antennaria tricolor 'E.C. Buxton'	3L	Full Pot	5/m ²
57	Brunnera macrophylla 'Looking Glass'	3L	Full Pot	4/m ²
29	Carex comans 'Frosted Curis'	2L	Full Pot	5/m ²
119	Carex oshimensis 'Evergold'	3L	Full Pot	5/m ²
207	Gaura lindheimeri 'Whirling Butterflies'	3L	Full Pot	3/m ²
139	Geranium macrorrhizum 'Album'	3L	Full Pot	5/m ²
27	Helichrysum italicum	3L	Full Pot	5/m ²
132	Nepeta 'Six Hills Giant'	3L	Full Pot	5/m ²
68	Polystichum setiferum 'Dahlem'	3L	Full Pot	5/m ²
178	Rudbeckia 'Goldsturm'	3L	Full Pot	4/m ²
84	Stipa arundinacea	3L	Full Pot	5/m ²
149	Stipa tenuissima	3L	Full Pot	4/m ²
219	Tiarella cordifolia	3L	Full Pot	5/m ²

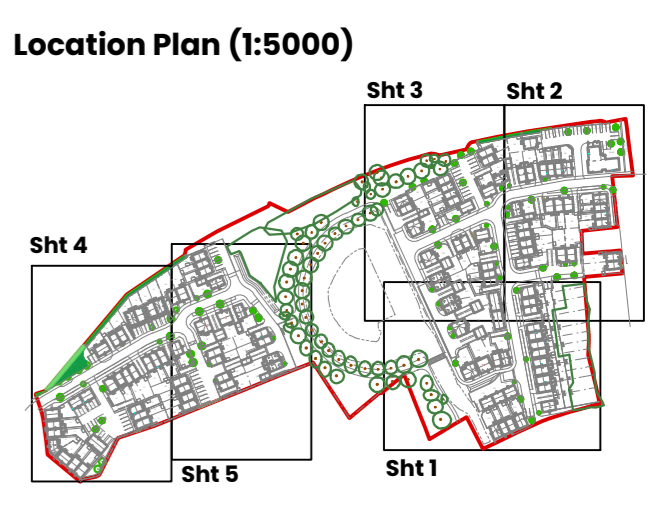
- 30 No. Corylus avellana
- 39 No. Crataegus monogyna
- 20 No. Euonymus europaeus
- 10 No. Ilex aquifolium
- 20 No. Ligustrum vulgare
- 39 No. Prunus spinosa
- 10 No. Sambucus nigra
- 10 No. Viburnum tinus



This line should measure 70mm when printed correctly
 This drawing is the copyright of Roberts Limbrick Ltd and should not be reproduced in whole or in part or used in any manner whatsoever without their written permission.
 Responsibility is not accepted for errors made by others in scaling from this drawing. Use only figured dimensions and report any discrepancies or omissions to the Architect immediately.
 Rev Date By Chk Description
 C01 30.01.2024 CL TH Issued for planning

Key

- Proposed trees
- Proposed specimen shrubs
- Proposed native hedges
- Proposed ornamental hedges
- Proposed ornamental planting
- Areas of on-plot gravel
- Amenity Grass
- Native shrub planting
- Wildflower Meadow Mix
- Biodiverse lawn grass mix



Roberts Limbrick
 03333 405 500
 mail@roberts-limbrick.com
 roberts-limbrick.com
Registered Office: England No. 06858029

Project Name
 Land North of Rounds Garden Rugby

Client Name
 St Modwen Homes

Drawing Title
 ON-PLOT PLANTING PLANS
 Sheet 4 of 5

Scale 1:200 A1 **Project No.** 10689

Status A3 **Purpose of Issue** Issued for planning

Project Org Vol Level Form Role
 R9112 RL XX ZZ DR L

Number P8304 **Revision** C01

